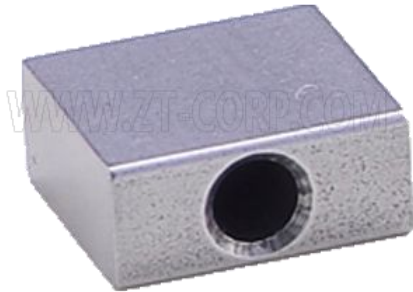


Fuel Injection Pump Vane

[Fuel injection pump blade](#) is part of the fuel injection system of the vane pump. Oil is mainly composed of a rotor, stator vane and both sides of the cover composition. The rotor is a cylinder having a radial groove, the groove placed vane, the vane can slide freely in the groove. A rotor eccentrically mounted in the pump body, when the rotor is rotated by a prime mover, vane centrifugal force or spring pressed against the inner wall of the pump body. In the first half of the rotor turns, the space between two blades surrounded by gradually increased the formation of partial vacuum suction liquid. After half a circle, this space decreases, squeezing liquid, the liquid pressure to the discharge tube. This is mainly used for the Bosh VE distribution type fuel injection pump.

Parameter:

1. Material : GCr15
2. Hardness : HRC 58° ~62°
3. Precision : 0.003~0.005mm or custom-made is acceptable
4. Surface Roughness: Ra<0.2

Thickness	Width	Length	Radius
2.991	8.700	10.000	+R6 -R1
6.000	13.000	14.000	+R12

ZT International — The most professional exporter on special steel

Tel:+86-571-28903510

E-mail:marketing@zt-corp.com

Fax:+86-571-28903510

baron.dayuan@gmail.com

Skype: baron.dayuan

Web:http://www.zt-corp.com

ADD: A401,Oceanwide International Center,2# Xiangzhang Road, Hangzhou, Zhejiang, China 310018.